

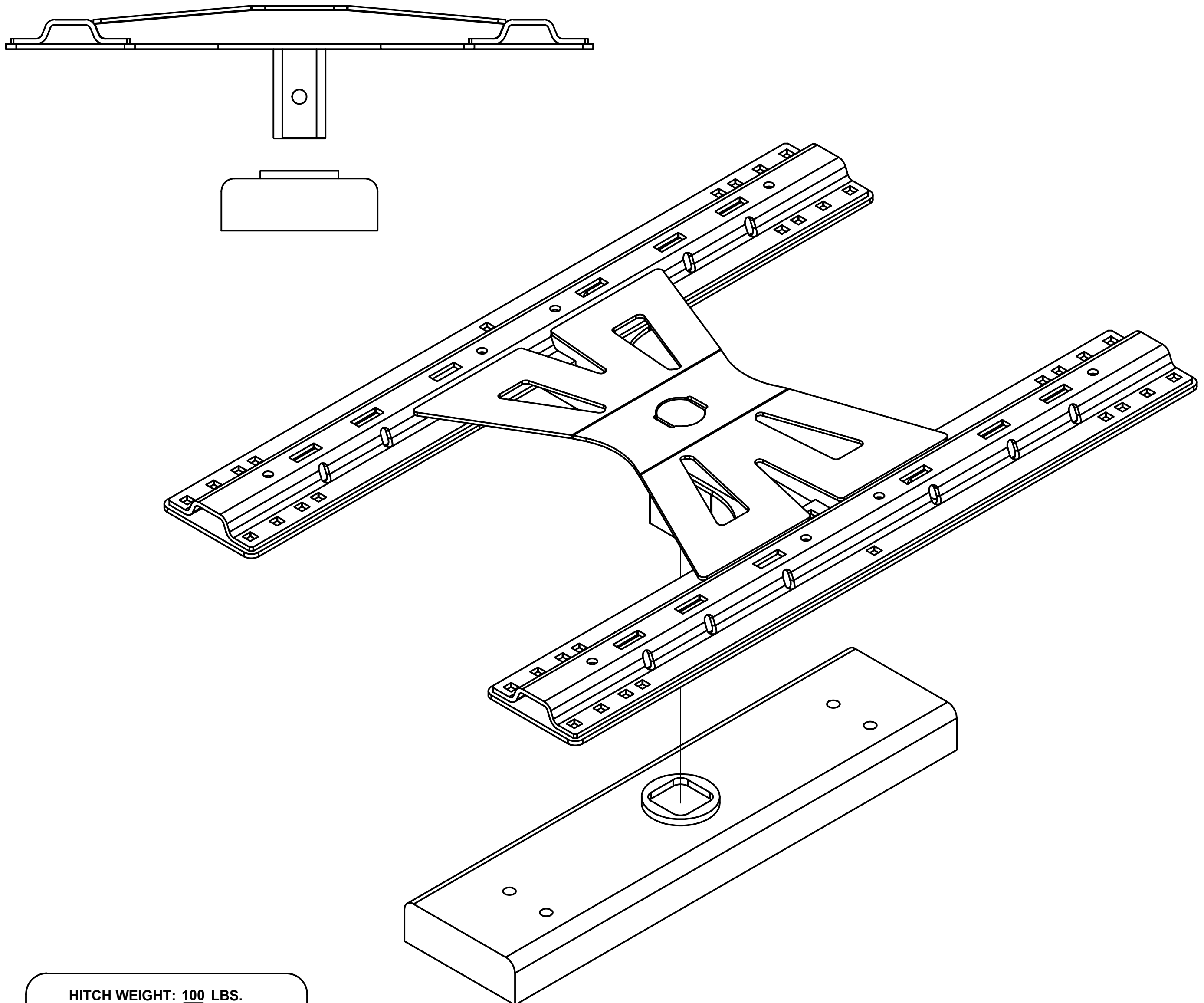
16310

X5 5TH WHEEL ADAPTER (B&W STANDARD CENTER)

12/16/2015

WILL NOT FIT B&W CENTERS 909 & 1256

GROSS LOAD CAPACITY WHEN USED AS A WEIGHT CARRYING HITCH: 20,000 LBS. TRAILER WEIGHT & 4,000 LBS. TONGUE WEIGHT.
*****DO NOT EXCEED VEHICLE MANUFACTURER'S RECOMMENDED TOWING CAPACITY.*****



HITCH WEIGHT: 100 LBS.

INSTALL TIME: 10 MINUTES

INSTALL NOTES:

- NO DRILLING REQUIRED

INSTALLATION STEPS

NOTE: Bed liners and bed mats may affect fit of X5.

1. Remove existing ball from gooseneck, leaving the handle in the "unlocked" position. Return ball to vehicle owner for future gooseneck use.
2. Install X5 5th wheel adapter plate into gooseneck cylinder and rotate double lock handle to lock unit.

PERIODICALLY CHECK THIS RECEIVER HITCH TO ENSURE THAT ALL FASTENERS ARE TIGHT AND THAT ALL STRUCTURAL COMPONENTS ARE SOUND.

Curt Manufacturing Inc., warrants this product to be free of defects in material and/or workmanship at the time of retail purchase by the original purchaser. If the product is found to be defective, Curt Manufacturing Inc., may repair or replace the product, at their option, when the product is returned, prepaid, with proof of purchase. Alteration to, misuse of, or improper installation of this product voids the warranty. Curt Manufacturing Inc.'s liability is limited to repair or replacement of products found to be defective, and specifically excludes liability for incidental or consequential loss or damage.